

WILTSHIRE POLICE

CPT Melksham Briefing

Trowbridge Area Community Policing Team

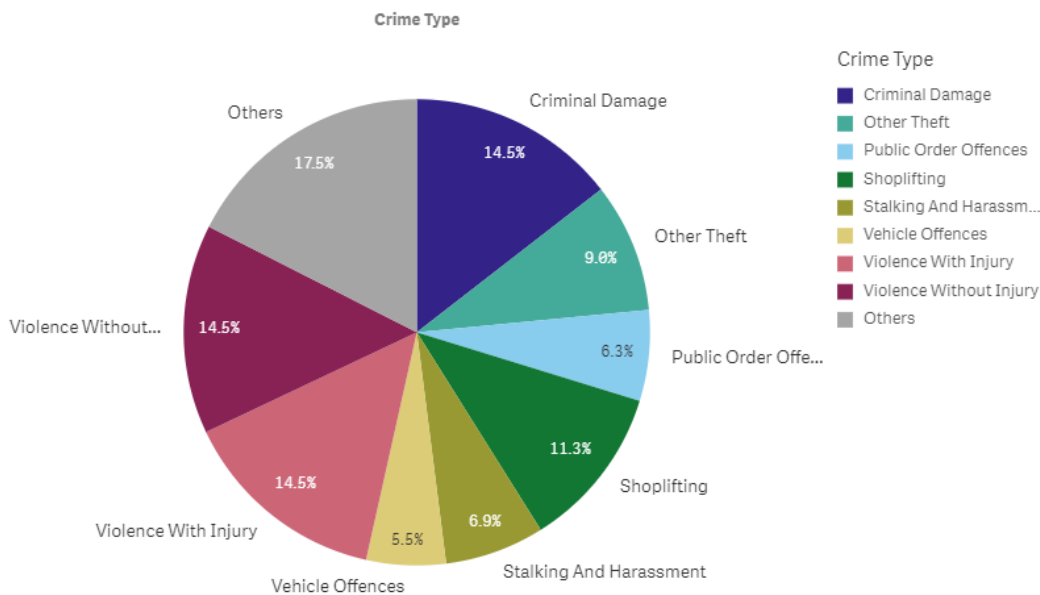


Proud to serve and protect our communities

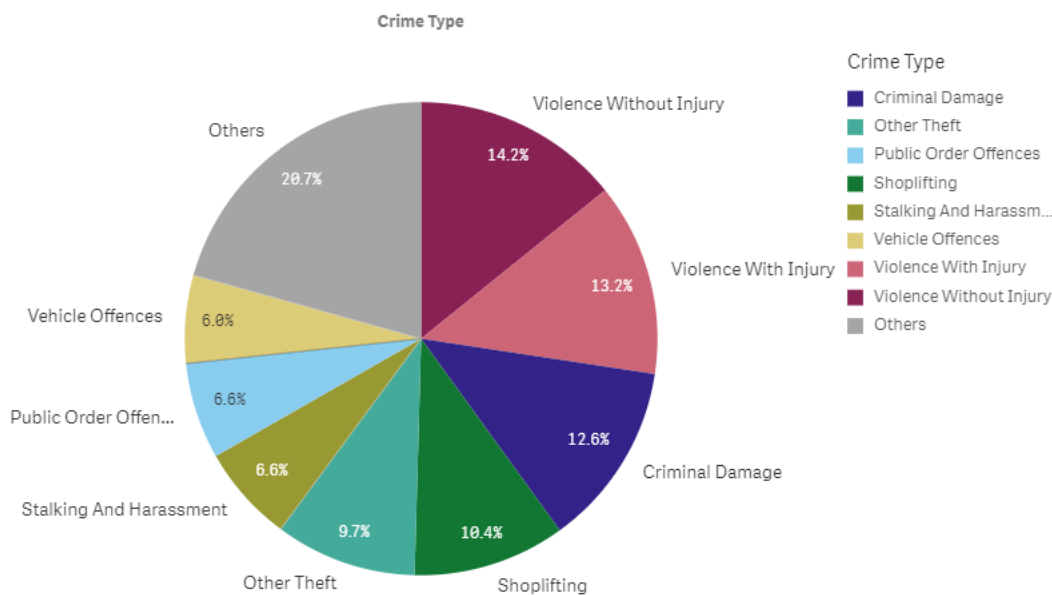
January /February 2020

PERFORMANCE

Your Area - Five Highest Crime Groups (Previous 12 months)



Force Area - Five Highest Crime Groups (Previous 12 months)



Wiltshire West CPT - crime and incident demand for the 12 months to November 2019

WILTSHIRE POLICE

CPT Melksham Briefing

Trowbridge Community Policing Team



Proud to serve and protect our communities

January/February 2020

Force-wide

- Wiltshire Police has had an increase in the volume of recorded crime by 4.5% in the 12 months to November 19 and continues to have one of the lowest crime rates in the country.
- Our service delivery remains consistently good.
- In November, we received 8,234 999 calls which we answered within 5 seconds on average and 11,604 CRIB calls which we answered within 1 minutes 28 seconds on average.
- In November, we also attended 1,594 emergency incidents within 10 minutes and 30 seconds on average.
- Wiltshire Police has seen a 10% reduction in vehicle crime and 9% in residential burglaries in the 12 months to November 2019.
- The Crime Survey of England & Wales recently ranked Wiltshire as one of the top forces (78.3%) nationally for public confidence. It covers the 12 months to March 2019.
The publication can be found here: WWW.CRIMESURVEY.CO.UK

For more information on Wiltshire Police's performance please visit:

PCC's Website - <https://www.wiltshire-pcc.gov.uk/article/1847/Performance>

HMICFRS Website - <https://www.justiceinspectorates.gov.uk/hmicfrs/police-forces/wiltshire/>

Police.uk - <https://www.police.uk/wiltshire>

WILTSHIRE POLICE

CPT Melksham Briefing

Trowbridge Community Policing Team

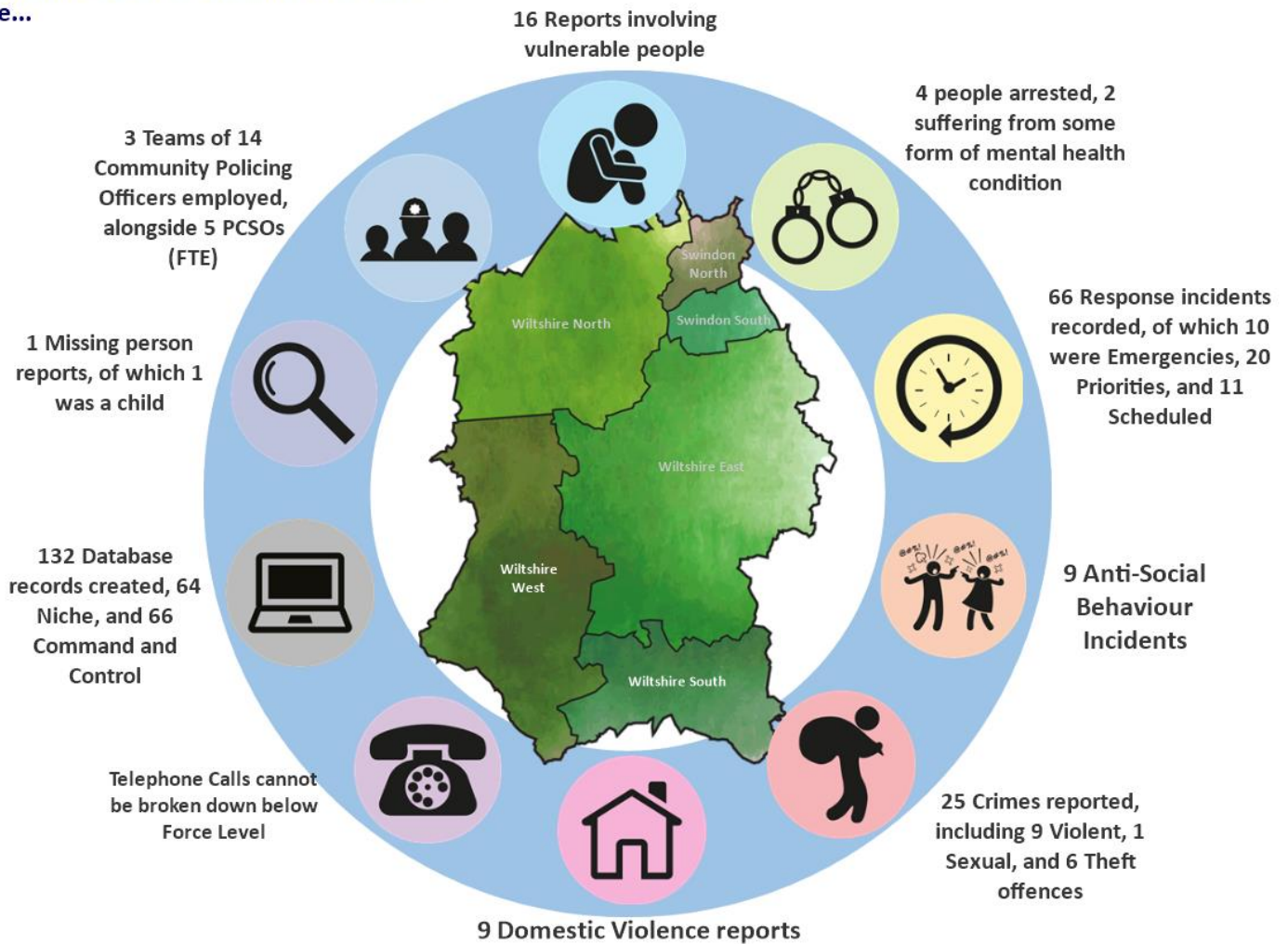


Proud to serve and protect our communities

January/February 2020

Area specific

On an average day in Wiltshire West there were...



Wiltshire West CPT Demand Overview – 12 months to November 2019

WILTSHIRE POLICE

CPT Melksham Briefing

Trowbridge Community Policing Team



Proud to serve and protect our communities

January/February 2020

LOCAL CPT UPDATES:

CPT structure Changes

With the uplift of resources currently on going and planned for the future, Wiltshire Police is currently undergoing a period of restructure. The old West Wiltshire CPT has been separated into two smaller areas which will now be known as the Trowbridge Area CPT (which will cover Trowbridge, Melksham, Bradford on Avon Area Boards) and the Warminster Area CPT (which will cover Westbury, Warminster and South West Wiltshire (Tisbury/Mere) Area Boards). CPT West Wiltshire will no longer exist.

The new general email to contact the CPT Neighbourhood team is now TrowbridgeAreaCPT@wiltshire.pnn.police.uk

We want to publicise this email and encourage all partners and members of the community to use this for community related matters as a way of direct contact with the local CPT Team. For all crime related matters there is still the normal routes of reporting via 999 for emergencies, or 101 and online crime reporting via the Wiltshire Police website: <https://www.wiltshire.police.uk/>

This has implications for staffing. Insp Andy Fee will remain in the area as the overall Inspector for Trowbridge Area CPT, with responsibility for the CPT Neighbourhood team, and the 5 CPT response teams, and associated resources. Insp Jill Hughes will take up the equivalent post in the Warminster Area CPT.

Two new Neighbourhood Sergeant Posts have been created and filled. These will be taken up by Sgt Leighton Williams who is in post, and Sgt James Twyford who is due to start with the team later this month, joining from Devizes CPT. All the previous Community Coordinators will now be known as CPT neighbourhoods Officers. Pc Lee Pelling will remain as a Melksham Officer, but will be joined by Pc Darren Foulger who moves across from Bradford on Avon later this month. The PCSO's remain the same and will continue in their current roles, however their line management will now come under the Neighbourhoods sgts for continuity.

We believe this is an exciting time for Policing as the new structure falls into place. It will be the bedrock for a clear vision for Neighbourhoods which will focus on Community engagement and better meet the needs of the local Community through long term problem solving and strengthened partnership working.

WILTSHIRE POLICE

CPT Melksham Briefing

Trowbridge Community Policing Team



Proud to serve and protect our communities

January/February 2020

YOUR CPT – Trowbridge Area CPT



Inspector Andy Fee

Sergeant James Twyford and Leighton Williams (awaiting Photos)

Neighbourhood Officers:



PC Lee Pelling (Melksham)



PC Darren Foulger (Melksham and Youth Early Intervention)

You can find out more about your local CPT, including news stories and contacts for local officers, on our website: www.wiltshire.police.uk

The new general email to contact the CPT Neighbourhood team:
TrowbridgeAreaCPT@wiltshire.pnn.police.uk

WILTSHIRE POLICE

CPT Melksham Briefing

Trowbridge Community Policing Team



Proud to serve and protect our communities

January/February 2020

LOCAL PRIORITIES

PRIORITIES FOR WILTSHIRE WEST CPT	UPDATE
Priority 1:	
<p><u>Young people in Melksham involved in ASB and criminality</u></p> <p>In May 2019 a disorder was reported in the Hawthorn Road area of Melksham, which involved a large group of youths.</p>	<p>*UPDATE* In total 7 youths were charged with a range of offences including public Order, Common Assault and one for ABH</p> <p>The youths all pleaded guilty at Youth Court on the 19th Dec 2019 and all were given Youth offender referral orders to work with YOT of between 5 and 10 months long, and ordered to pay compensation to the victims.</p>
Priority 2:	
<p><u>Op Artemis – Rural Crime</u></p> <p>This is the ongoing rural crime operation overseen by the Rural Crime Team for the county. They will arrange for specific patrols during the course of the year in cooperation with and supported by the farming community with a view to tackling, deterring and detecting overnight rural crimes.</p>	<p>Many pro-active patrols are still being carried out in rural locations across the CPT area. There has been an uplift of officers trained in Rural crime matters to become local champions and can assist officers in investigations. The Rural Crime team also continue to offer direct support and guidance to farmers and wider rural community.</p>
Priority 3:	

WILTSHIRE POLICE

CPT Melksham Briefing

Trowbridge Community Policing Team



Proud to serve and **protect** our communities

January/February 2020

Enforcement of Closure Order – The Friars, Melksham

In response to ASB and drug activity, Melksham Police along with Selwood Housing and Wiltshire Council were successful in securing a Closure Order on an address in The Friars from Salisbury Magistrates Court.

The Order prevents anyone other than the listed tenant for being in or on the property. Anyone else found at the address can be liable to arrest. The order is valid for 3 months and runs until midnight on the 6th Jan 2020. The Police will be doing regular checks at the address.

UPDATE The Order has now ended. Overall it has been successful in its purpose, with several people arrested from the address, and several people removed. We are working closely with Selwood Housing and Wiltshire Council to monitor the situation. Selwood are now seeking repossession of the property concern in the very near future.

WILTSHIRE POLICE

CPT Melksham Briefing

Trowbridge Community Policing Team



Proud to serve and protect our communities

January/February 2020

HIGH LEVEL PCC UPDATES

- **Precept Consultation** – From 6 January, I will be consulting with residents and businesses in Wiltshire and Swindon on what they would be prepared to pay as part of their council tax bill next year's towards local policing. I am still waiting for notification from the Home Office on what our settlement will be in Wiltshire for 2020/21 and hope to be in receipt of this soon. I strongly encourage you to [submit your feedback on my website](#).

HIGH LEVEL FORCE UPDATES

- We continue to implement **changes in our community policing teams** to better meet demand in our different patches. It is a phased approach and as of December the boundaries of our community policing teams changed with their names also changing to reflect the areas covered.

The new list is: Swindon Area CPT, Chippenham Area CPT, Royal Wootton Bassett Area CPT, Trowbridge Area CPT, Warminster Area CPT, Salisbury Area CPT, Devizes Area CPT and Amesbury Area CPT.

- **Changes to 101 system** – In mid-December the options available when members of the public call 101 have changed to allow for to be connected directly to some departments. They will also no longer be taking reports of shoplifting unless it is in progress, an offender is detained or there was violence to any members of the public or staff. Instead callers are encouraged to report the crime online and submit any available CCTV.

GET INVOLVED

- You can keep up to date with the latest news in your area by signing up to our Community Messaging service –

www.wiltsmessaging.co.uk

- You can follow your CPT on social media

WILTSHIRE POLICE

CPT Melksham Briefing

Trowbridge Community Policing Team



Proud to serve and **protect** our communities

January/February 2020

<https://www.wiltshire.police.uk/Followus>

- More information on your CPT area can be found here: www.wiltshire.police.uk and here www.wiltshire-pcc.gov.uk

FEEDBACK/ACTIONS TAKEN